

Sierra Elementary PTA School Gift Proposal Form 2024-2025

What is a PTA School Gift?:

At the end of each fiscal year, the PTA must have enough cash to cover next year’s budgeted expenses. The amount in excess of next year’s budgeted expenses can be used as a school gift. The past few years, the school gift was estimated toward the end of the school year and all proposals were quickly submitted and presented at the last PTA General Meeting. Going forward, school gift funds will be calculated at the beginning of the school year and proposals will be open for submission and presentation at PTA General Meetings throughout the school year. Proposal ideas must be realistically executed during the current school year.

Remaining School Gift Amount: \$25,000 as of August 2024

At the last PTA General Meeting in April, membership voted to approve school gifts totaling \$25,000. The approved gifts were: a playground sun shade, Mimio boards in classrooms, recess equipment, and an alumni scholarship. An additional \$25,000 is available on a first-come-first-served basis until the remaining amount is fully utilized.

School Gift Vote:

Voting will take place at PTA General Meetings (September 18th, November 6th, February 5th, and April 23rd.) You must be a current PTA member and present (either in person or through Google Meet) to cast a vote. If you are submitting a proposal, it is highly encouraged that someone presents the proposal at a meeting. Proposals will be approved or rejected at the same meeting.

School Gift Proposals Due:

At least one week prior to the PTA General Meeting at which the proposal will be presented. This proposal form can be electronically submitted to **Treasurer@SierraPTAArvada.org** or left in the Treasurer mailbox in the front office. The proposals will be posted to the PTA website and the PTA Facebook page prior to the vote.

.....

Description of Proposed School Gift: PTA to cover school-wide field trips costs for families during the 24/25 school year

Amount of Money Requested: \$15,000

Provide an overview of bids or pricing for the proposed school gift (You can attach bids or an additional expense analysis): Nicole provided estimate based on last year's field trip expenditures

Feel free to attach or email any pictures, bids or additional information that could help describe the proposal.



3 E e a a A
e e
- - 3 -

SIERRA ES - SHADE

SIERRA E E E AR S H
A DA S HIPPE
a S ee
A a a
e Sae

S o

a	Pa	De	o	P e	A o
RI	-S a e-	H	I HE		I
I S A	A I DE	RA I	-E IP E	I S A A I	
				S o a	
				D o	3
				eg	
				o a	3

o e

ADI S RA E PER I S PRI A E A E HERS

P g a o eg age A o e ea P g a fo 3 a fo e ae of o a o
Pea ee e ae o eafe 3 Da

a e Peaea a fa a e
A a a e e e ea e a e of o g e a a - e e e f a e o e
If ae a e e o o ea o of e f a e o e o e e e e

e Re e e o e o e o e e e ea e o e e fo o g fo a o

e P a e e o a o De o e
o ee A e a e o
3 oo See o fo o E e fa a e
Sae a E e o e f a e fa a e

Payment terms: e 3 a fo a o e go e e a age e o P a e e a e o o A e Re ea o e a o a
Rea age o a e e
e e e e a e o e lf o e e e o a e a a o e g fee of ea e e o ea o
of o a e
o e a e e o o a e A H o e o a o a fee e e e a a o a fa g a e
e a o ee a e o ee
A a e fee of o of e a e e a a e e e g a e e o f a e age e o e o a a e o e
l e e e e o e e a o e o o a a o o e o e o e a a o a a e e Ag ee e
o e ag ee o e e A e Re ea o fo a o a a o e fee e e

Shipment: Standard GameTime playground and furnishings order shall ship within 8-10 weeks, Custom Components or Panels 12-15 weeks, Vista Ropes Climbers 12-18 weeks, Standard Shades and Shelters 14-16 weeks, Surfacing 1-2 weeks, Victor Stanley 7-9 Weeks after GameTime's / Altitude Recreation's receipt and acceptance of your purchase order or receipt of deposit, if required.

A o e e a g age fo e e a fa e afe e a ea a e o a o age fee of a
e a a a o a e ee e o e
e o e ee o e o a ee fee o e ee e f g a e a e a o f e e o ea o a age
o e



3 E e a a A
e e
- - 3 -

SIERRA ES - SHADE

De e e e e e e of oea e a ea offoa gofe e o e
o e e e o efo e g e e a o e a e o gae aee e a o a o fo offoa g
Afo f a e e e efeg a e e o a e eg ae o e o a o a a e of e e e
o e e o efo o ga a age o o age o efeg a e ge e o e e
o of A eRe ea o e ae ofa e a e - - 3 -
E e l a a o S e o e e e of oee e a a o a a e o o e
If A eRe ea o o a e fo a a o ofa e e o e o efo o g e a o o a a

A e o e agee o e fee a e a e o e e e a aea of e o efo e e e e
A e aea e fo a e e e a o age of aea a a o e a e a a e ogo e a a o o e
A e a a o of e ea oa e o age of e e o e of e

S e e e e e e of oe o e a e e o efo a g e e ae fo e e a a o
e o e of e a a o f e e e a o a a o e e oe ea e f a a o a a o a
a go
A afe fa g a o a f a gae e e o e afe a go a a o l e o e e a a f a a a g
fe g e a e e o e e afe a a o ofe e a o fa g
A eRe ea o o e o efo a age o ga o o e efea e e o o a e e a e e e

Pe e o e e e e a o e agee o o a a ea a o e o e o o a ga e e a
e fo e e e o e

De o Re o a E a a o o D g e e e e of oe A eRe ea o o e o efo e a ga
a a g e a e of e e o gga fo e e e
e a e o o efo a e o o a age ga o o a e g a ga o e e o o e a e
e a a e o ea a e A eRe ea o a o o a e a e efo e e e o a
A e o a a o ae e a e e o e e o o a e a e efo e e o a A eRe ea o o e o e
fo a a age e o a a o ae e e e e e o a g a e f o ea a e a o e e
e e e o a a o e o a o ae e a e a e e o e a efo a a age o e e e o o o e a
a a ea a a e e e e o ea e e e g o a e o oae e o ga e o e e
Ha g o e o a e o o a age a o e o ea a a e a e of o g oe a a e o a o a
o g o a o a o a a e a a o a e e ea a o a age o o e

e g S e S e e e e e e of oe o e a e e o efo fe g e o e o o e o of e
a a o o e efo e a e afe fa g efo o
l o e e o o o a e o e e g a e o A eRe ea o o e o efo a age e o
e e a e o e o e efo e e o e a e a e o e e e o o o o
aff o o e e e e e of oea aff o o a e e fo a oe e o e e o

a Re o a e e e e of oe o e a e e o efo a e o a o e a e e aea e
a a a e o efo a e o o e of a o a o e e e

o a o e e e e e of oeo o e o a o e a a o a o a o e e o o e a e
a e of fo ea o e e
If a a o e e a o e o e e e o a e aea e o e a e e o o a o a o a o e e fo ea
o e e

P A R E I S S I I A R I A R A R S I E S E R 3 3
A I D E R E R E A I A R I A R A R S I E S E R 33
A I D E R E R E A I I E E I R A R S I E S E A 33

E o e e f a e o a o e e a o e a g age e e o a a a g e o a of
e ge e
A e a e of e e a off-oa g o age of goo o o a a o e e a e a a a o afe fa g o e a
a age o o



3 E e a a A
e e
- - 3 -

SIERRA ES - SHADE

A e e e Sg a e
P o P a e A o
Dae e
P o e a e

e l fo a o
o o a
A e e
Sae
E a fo l o g
S o o a
A e e
Sae

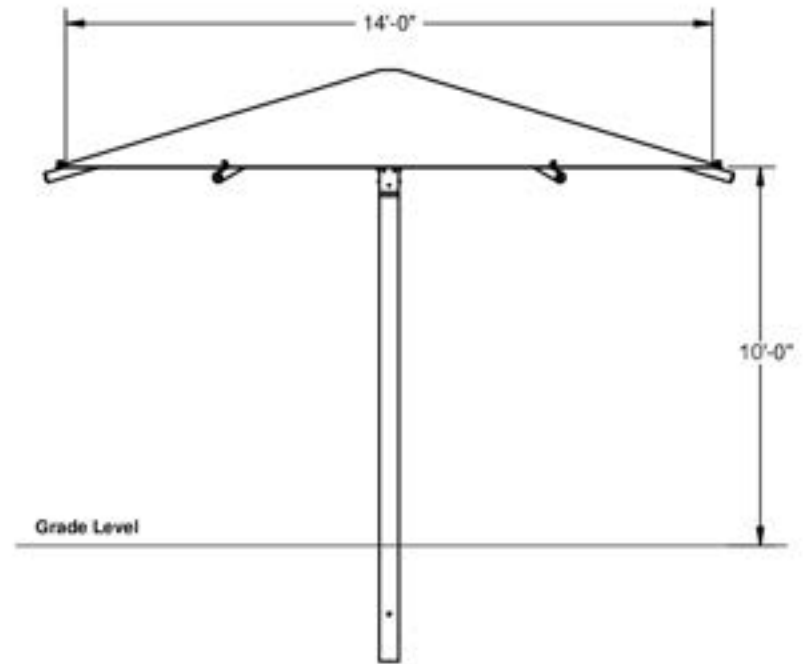
I EDERA IDE I I A I ER
SA ES A E E P I ER I I A E
P A E E P I ER I I A E S E PR IDED RA A E E P R DERS

RSE E I S
Sa a oo Pae e See o fo ga e e o oo
o o oo See o a fo o
g RooPa
A e ea De
HDPE oo HDPE
Ro e
Pa Roof Ro e
S a e a S a e ea
S e g a e S e g oa e Sea o
R e Safe S fa g

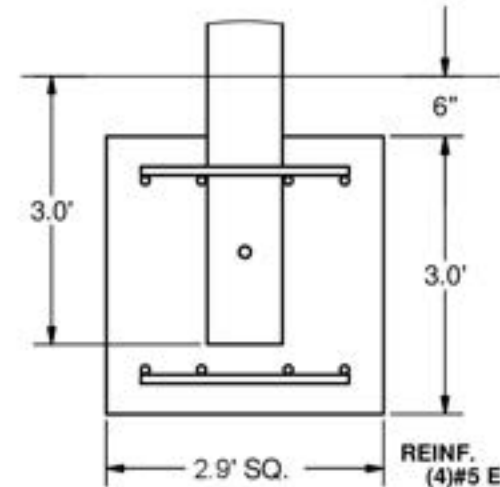
HEXAGON UMBRELLA SHADE

14' x 14' x 10'

MODEL #:
 HU141410IG (With Glide Elbows)
 HU141410IN (Without Glide Elbows)



REF.#	PART DESCRIPTION	QTY.
1	Ø5.0" Column - Surface Mount	1
2	Ø5.0" Crown - With Four Sockets	1
3	Ø2.5" Rafter - Swaged With Bracket	4
4	Strut - Rigid Fixed	4
5	Fabric - With Cable Insert	1
6	Frame Hardware Kit	1



FOOTING DETAIL

*Footing design based on 1500 PSF soil bearing pressure.

These drawings are for reference only and should not be used as construction details. Materials, fasteners, and foundations are subject to change if professionally sealed engineering drawings are required. Designed for 93 MPH Basic Wind Speed.

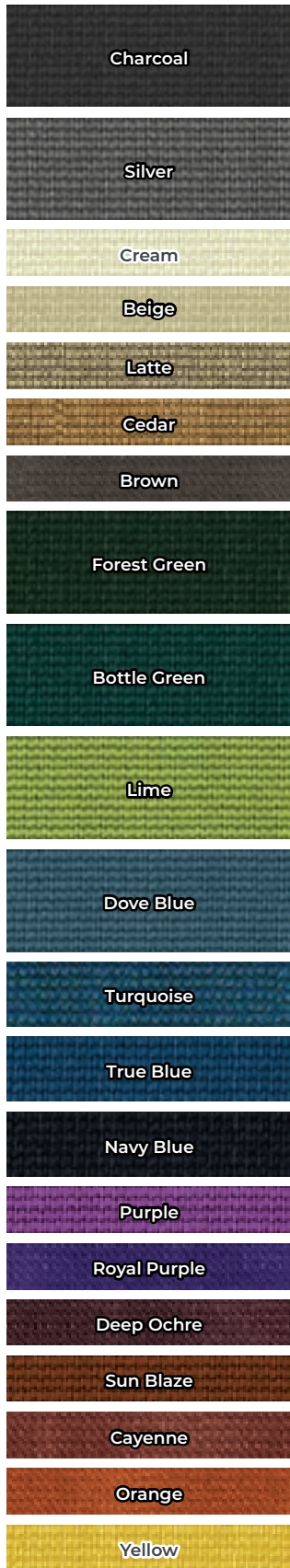
MATERIAL COLOR OPTIONS

METAL	PLASTIC	HDPE	2 COLOR HDPE
Black	Champagne	Black	Black/White
Starlight Black		Dolphin Gray	Gray/Black
Metallic	Beige		White/Black
White		Brown	Brown/White
Vanilla	Green		Green/White
Champagne		Chartreuse	Spring Green/White
Beige	Spring Green		Azure/White
Brown		Azure	Sky Blue/White
Bronze	Blue		Blue/White
Dark Green		Periwinkle	Purple/White
Green	Royal Purple		Burgundy/White
Sage		Burgundy	Red/White
Ice Butter	Red		Orange/White
Ice Mint		Orange	Yellow/Black
Chartreuse	Yellow		
Spring Green			
Ocean			
Azure			
Sea Mist			
Sky Blue			
Blue			
Periwinkle			
Royal Purple			
Burgundy			
Red			
Orange			
Butterscotch			
Yellow			

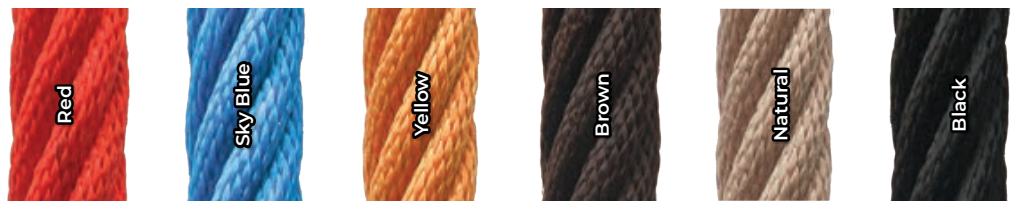
Actual colors may differ from the images represented here. Contact your local GameTime representative for sample materials.

MATERIAL COLOR OPTIONS

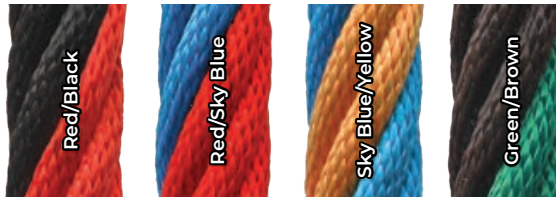
SHADE FABRIC



VISTAROPÉ™ STANDARD



VISTAROPÉ™ CUSTOM



*Colors for VistaRope products only. All standard GameTime ropes are black.

SPECIAL ROCK



Sandstone

Deep Granite

WALLCANO® HANDHOLDS



Red

Green

Blue

Beige

SITE RECYCLED PLASTIC LUMBER

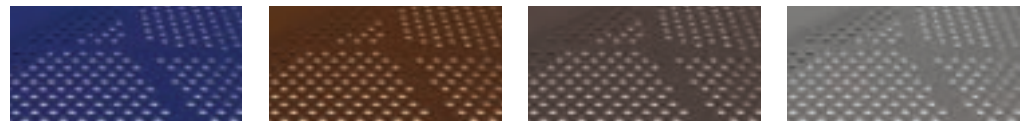


Gray

Tudor

Sand

DECKS



Blue

Brown

NEW! Chocolate

Gray

WARRANTY

GameTime offers a comprehensive warranty on all of our products.

For the purpose of this warranty, “lifetime” encompasses no specific term of years, but rather that the Seller warrants to its original customer for as long as the original customer owns the product, and uses the product for its intended purpose, that the product and all its parts will be free from defects in material and manufacturing workmanship.

- **Lifetime limited warranty** on PowerScape®, PrimeTime®, Xscape® & IONiX® and Modern City® uprights.
- **Lifetime limited warranty** on Tru-Loc® connections and upright bolt-through connections.
- **Lifetime limited warranty** on all hardware.
- **Twenty-Year limited warranty** on Timber Décor & Timbers recycled plastic lumber.
- **Fifteen-Year limited warranty** on metal decks, pipes, rungs, rails, loops, braces, and footbucks.
- **Fifteen-Year limited warranty** on rotationally-molded products.
- **Fifteen-Year limited warranty** on VistaRope™ nylon bearings and ring junction pieces.
- **Ten-Year limited warranty** on GTFit®, THRIVE® and Challenge Course posts & bars.
- **Ten-Year limited warranty** on site furnishings against structural failure.
- **Ten-Year limited warranty** on SunBlox products.
- **Ten-Year limited warranty** on fiberglass and DHPL signage.
- **Ten-Year limited warranty** on VistaRope™ WeaveTech™ cables.
- **Five-Year limited warranty** on Tuff Forms® structures, including TuffCrete and PolyShield.
- **Five-Year limited warranty** on nylon-covered cable net climbers and components.
- **Five-Year limited warranty** on GT Symphony Freenotes™ Harmony Park components.
- **Five-Year limited warranty** on Super Seats.
- **Five-Year limited warranty** on premature wear of VistaRope cables.
- **Three-Year limited warranty** on EveryBODY Plays® polyurea coated foam & rubber strips.
- **Three-Year limited warranty** on SaddleMates rubber and “C”-springs.
- **Three-Year limited warranty** on rubber seat and rubber mats for net events.
- **One-Year limited warranty** on Challenge Course timing components.
- **One-Year limited warranty** on all other GameTime products.

TO THE EXTENT PERMITTED BY LAW, THESE WARRANTIES ARE EXPRESSLY IN LIEU OF ANY OTHER IMPLIED OR EXPRESSED WARRANTIES OR REPRESENTATIONS BY ANY PERSON, INCLUDING ANY IMPLIED WARRANTY OF MERCHANTABILITY OR FITNESS. Warranties do not cover damage caused by vandalism or abuse. Warranty claims must be filed within the applicable warranty period and accompanied by a copy of the original invoice or GameTime invoice number.

Sierra Elementary PTA School Gift Proposal: Playground Shade

Description of Gift:

The Sun Safety Committee of the Sierra PTA is submitting a school gift proposal for a 14-foot hexagonal shade umbrella on a 10' post to be installed in the grass between the K-2 playground swings and the track. It would be identical to the shade umbrella near the grade 3-5 playground/track area. It would protect students from UV rays, provide cooler places to play or learn during the hotter months, and be available for all children of Sierra and the neighborhood. Based on the popularity of the two existing sun umbrellas with our students, this new source of shade would be highly utilized.

The fabric filters out 95% of UV rays and has a 10 year warranty, while the frame has a 15 year warranty. The cost of fabric replacement was \$800 in 2020, though this has only been necessary in a few cases in the vendor's experience, and the vendor has never had to replace the frame due to damage. The vendor states the umbrellas are engineered for wind and most snow loads. It does not need tensioning or annual maintenance beyond a volunteer with a broom to help clear wet spring snows of more than 5", which has only been necessary 2-3 times in the last four winters.

Mrs. Peters has been teaching our children about sun safety and skin health during their PE classes for the past two years. Another shade umbrella in the K-2 recess area is an excellent addition to our sun-exposed playground to allow our children to make educated choices on where they play.

In May 2023, the Sun Safety Committee involved the 5th grade students in a sun safety service project by having them select three potential locations for the new shade umbrella, then design and conduct a survey of Mr. Eathan's class and the K-2 classrooms of where students would like shade the most. Results of the survey showed that this location was the most popular choice (note- they ultimately selected the sand box due to increased sun sensitivity of students in Mr. Eathan's class, who play extensively in the sand box).

Money requested: \$8,703.19

The total cost of the umbrella is \$8,703.19, which includes the cost of the frame, fabric, shipping, and installation. The Sierra Sun Safety Committee received an Arvada Neighborhood Project Grant for the installation of the sand box umbrella in May 2024, therefore the Sierra Vista neighborhood is not eligible for another grant for the next two years. If approved, the umbrella could be installed within approximately 10 weeks.

Overview of bids:

The bid provided is from a company that is a “JeffCo School Approved Vendor”, which is a pre-requisite for working on JeffCo Schools properties. The company installed our current playgrounds and the existing two shade umbrellas. They are familiar with the ground conditions including buried drainage pipelines as well as JeffCo playground regulations and have been extremely easy to work with.

Picture of Product:

This is a picture of the existing umbrella near the grade 3-5 playground. The new umbrella would be identical in size, shape, and color. This umbrella was installed Fall of 2020 and has needed no maintenance to date.

